



ABRASIVE FLOW SOLUTIONS



NOZZLE CHECK VALVE

The function of check valves is to allow the media to only flow in one direction but closes when the media flows in the opposite direction. This means they do not need to be manually operated and will instead be fully and automatically operated by the forces caused by the flow of the media. Between the various models there will be differences in closure characteristics. The closure characteristics depend on the flow conditions, valve design and position of the discs in a unique way, and therefore selection of check valve should be done by valve engineers.

Product Specifications:

Size Range:	DN80 - DN1200
Valve Type:	Check Valve
Materials:	A wide selection of materials is available; also internal hard rubber lining for saline applications.
Temperature Range:	-20°C to +70°C
Pressure Rating:	363psi (25 Bar - higher)
Coating:	Fusion Bonded Epoxy (FBE)
Colour:	Blue, ca. RAL 5005

Features:

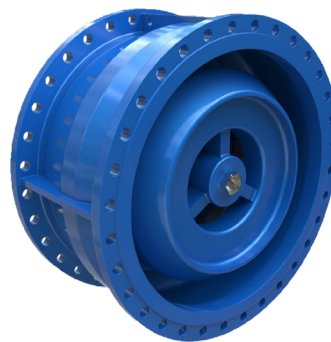
- Both designs have a double bearing system for reliable guiding and operation.
- The possibility of tuning the spring load for adapting to site conditions at order stage.
- A variety of material applications.
- High grade corrosion protection.
- Silent Check Valve lightweight and short build length means it is more economical solution.
- Easy installation and handling.
- Higher head loss.
- The shaft protrudes into the pipeline when the disc is open.
- Lower head loss due to a longer body with specialised streamline flow path.
- Spring is protected in an enclosed chamber.
- No shaft protrudes into the pipeline.
- Higher weight and cost.
- More space needed for installation in pipeline.



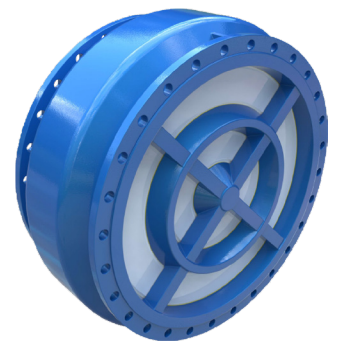
SILENT CHECK VALVE



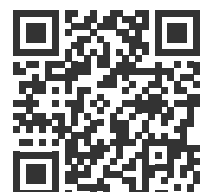
VENTURI TYPE NOZZLE CHECK VALVE



RING TYPE NOZZLE CHECK VALVE



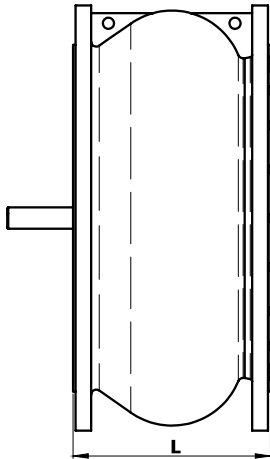
LIGHT DISC NOZZLE CHECK VALVE



Applications

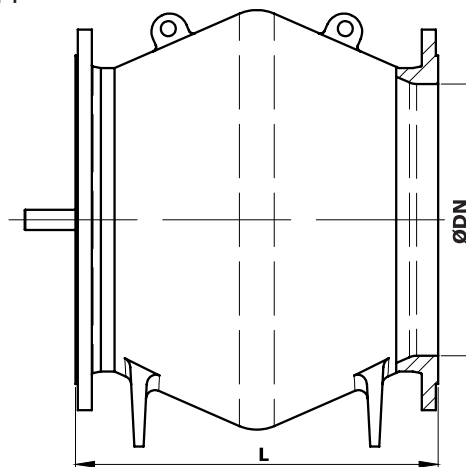
The valve is suited for pumping stations, treatment plants, reservoirs, pipelines, power stations, desalination plants & industrial applications.

Dimensions & Weights



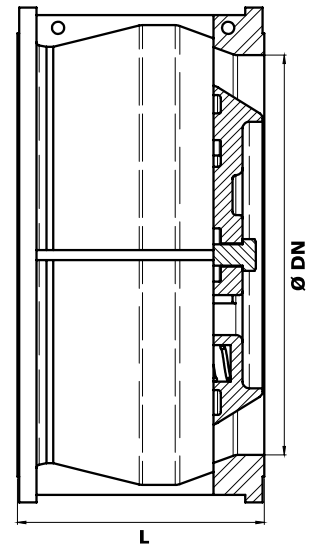
SILENT CHECK VALVE

DN	L	Weight PN10-16
50	150	8
80	180	12
100	190	16
125	200	20
150	210	25
200	230	40
250	250	55
300	270	80
350	290	115
400	310	150
450	330	195
500	350	240
600	390	370
700	430	455
800	470	590
900	510	770
1000	550	1000
1200	630	1570



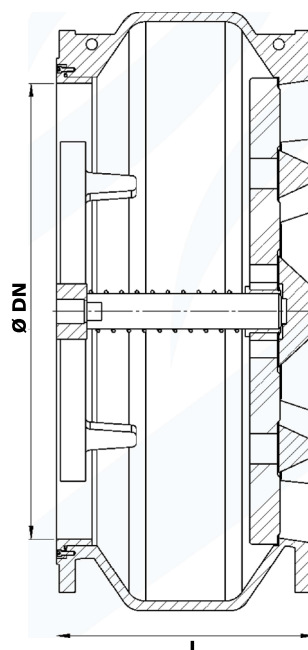
VENTURI TYPE NOZZLE CHECK VALVE

DN	L	Weight PN10-16
250	450	150
300	500	225
350	550	300
400	600	380
450	650	500
500	700	620
600	800	800
700	900	1150
800	1000	1700
900	1100	2500
1000	1200	3350
1200	1400	4700



RING TYPE NOZZLE CHECK VALVE

DN	L	Weight PN10-16
300	181	140
350	215	175
400	245	230
450	264	340
500	305	460
600	370	730
700	430	930
800	500	1300
900	560	1850
1000	650	2500
1200	740	3200



LIGHT DISC NOZZLE CHECK VALVE

DN	L	Weight PN10-16
250	250	50
300	370	75
350	290	105
400	310	135
450	330	180
500	350	220
600	390	340
700	430	410
800	470	530
900	510	700
1000	550	900
1200	630	1420

Dimensions and weights are for guidance only - detailed dimension drawings available on request. All dimensions are in millimeters, unless stated otherwise.

